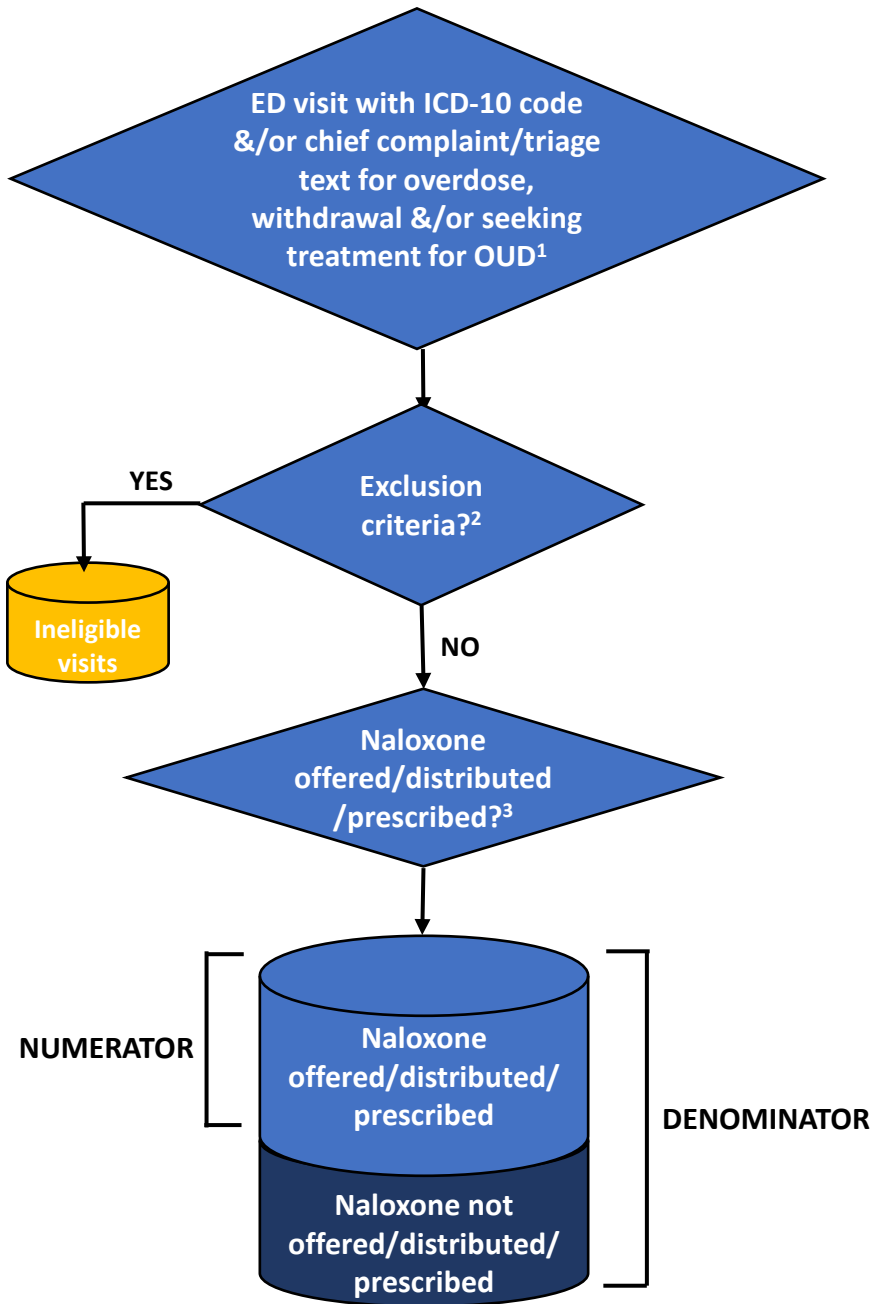


MEDIC
Opioid Naloxone Measure Specification Flow Diagram
Ages ≥ 12 years old



- ¹ED visits with the following:
- Cases with disposition of discharge or ED observation
 - Discharge diagnosis of poisoning in any position with the following ICD-10 codes: T40.1X1, T40.1X4, T40.0X1, T40.0X4, T40.2X1, T40.2X4, T40.3X1, T40.3X4, T40.411, T40.414, T40.491, T40.494, T40.601, T40.604, T40.691, T40.694 (also included terms with no period, e.g., "T401X1")
 - Discharge diagnosis of opioid abuse/dependence/use with intoxication in any position with the following ICD-10 codes: All F11.X terms (also include terms with no period)
 - Chief complaint &/or triage note text including narkan or naloxone
 - Chief complaint &/or triage note text including at least 1 overdose/withdrawal term AND at least 1 opioid term

- ²Abstracted denominator exclusion:
- Primary reason for ED visit OTHER than opioid OD, active withdrawal, or seeking treatment for OUD*

³Abstracted data field

$$\% \text{ naloxone offered/distributed} = \frac{\# \text{ eligible cases w/ opioid overdose, withdrawal, \&/or seeking treatment for OUD offered/distributed naloxone}}{\text{total \# eligible cases w/ opioid overdose, withdrawal, \&/or seeking treatment for OUD}}$$

Naloxone Distribution Measure:

Quality initiative measure reported as: % opioid overdose, withdrawal, &/or seeking treatment for OUD cases discharged from ED w/ naloxone offered &/or distributed

Denominator = ED visits of patients with opioid overdose, withdrawal, &/or seeking treatment for OUD who were discharged from the ED

Numerator = ED visits of patients with opioid overdose, withdrawal, &/or seeking treatment for OUD who were offered &/or distributed naloxone & discharged from the ED

*OUD = opioid use disorder